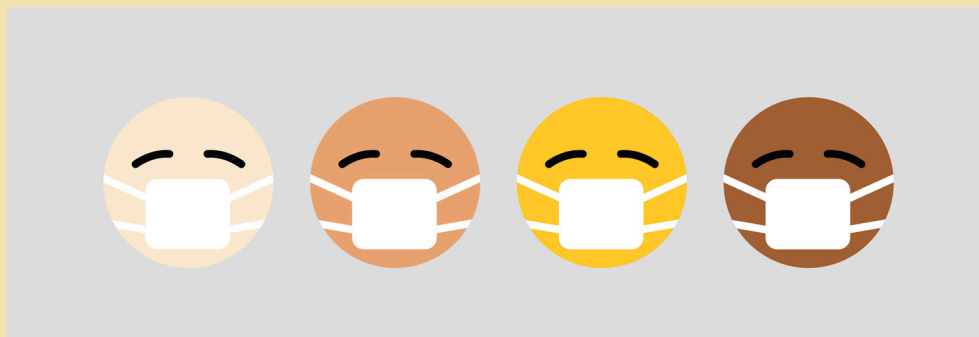


Purdue University Fort Wayne Continuing Studies

PERSONAL SAFETY AND HEALTH ON CAMPUS



Classrooms and Labs

We are undertaking a comprehensive approach to preparing classrooms and labs to maintain social distancing, provide protective barriers, decrease density, and provide enhanced cleaning and sanitization. This includes reconfiguring classrooms and strictly limiting the number of seats based on the size of each room. Classrooms will be cleaned and sanitized at least twice daily, and clear protective partitions will be installed in the front of all classrooms. Additional measures and procedures are being developed to control traffic flow in and out of classrooms and between classes.

Face Masks

To help ensure the safety of all students, faculty, and staff, **the university is requiring face masks to be worn by everyone on campus, in every building, effective immediately and until further notice.** As a good practice, masks should be worn in other high-density locations, such as in gatherings outside or transitioning in crowds to other buildings on campus.

Social Distancing

Social distancing has become the norm, and we will continue to adhere to now-commonplace practices for distancing. Floor decals will help denote spacing in some public areas. Signage will be placed around campus with reminders for social distancing and hygiene.

Hand Sanitizer

Hand sanitizer stations, sanitizing wipes, and other disinfecting supplies will be located in all classrooms and throughout campus buildings.

Handwashing

The university strongly encourages frequent handwashing by all members of the campus community. While the CDC notes that touching a surface or object that has the virus on it is not the main way the virus spreads, good hand hygiene, including not touching your eyes, nose, or mouth with unwashed hands, is an essential protective measure that each person should follow.